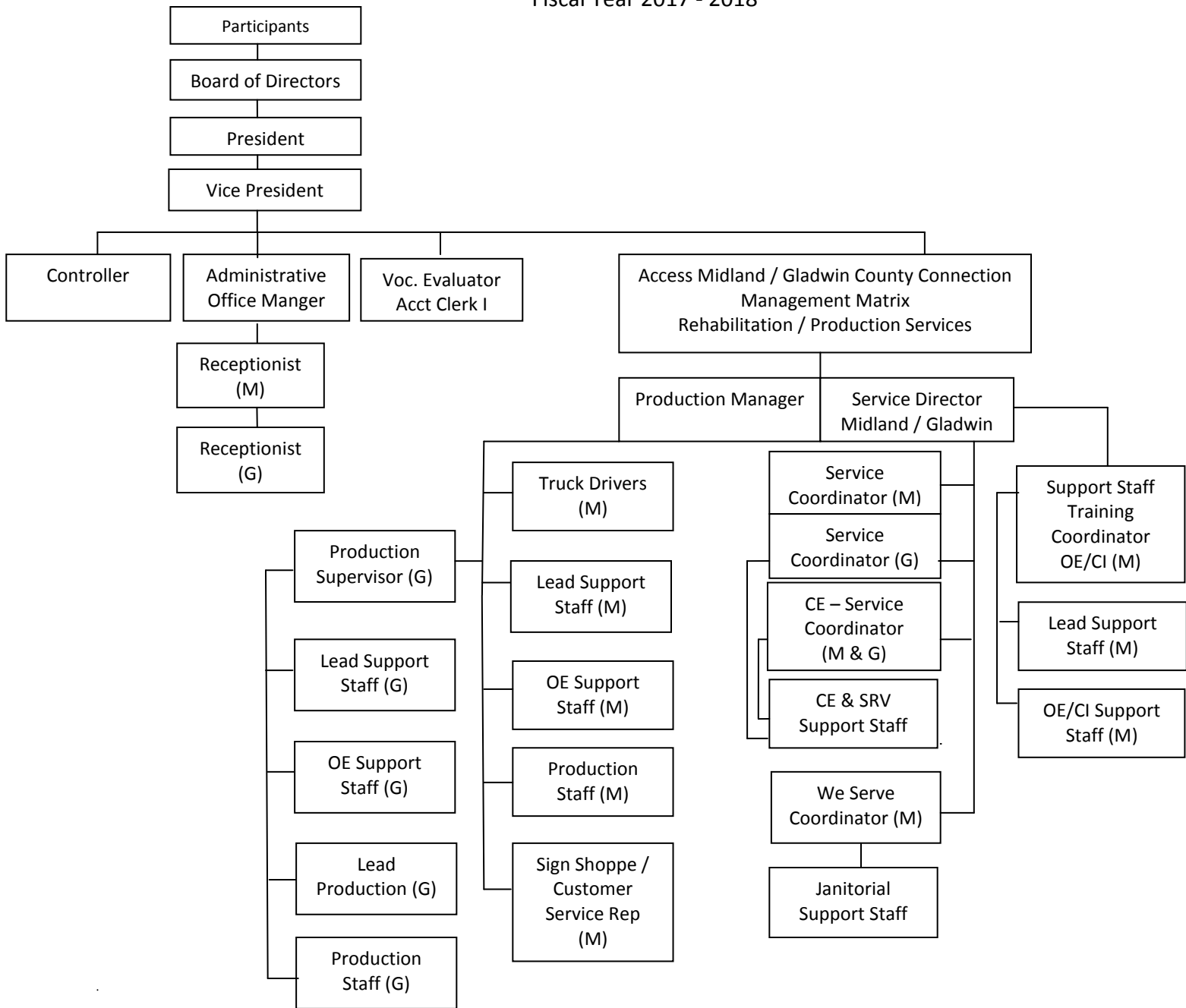


Organizational Chart
Fiscal Year 2017 - 2018



The organizational structure represents over 70 employees working out of offices located throughout Midland and Gladwin Counties. The organizational structure was meticulously designed, in consideration of the Arnold Center's mission and vision, to ensure efficient and effective delivery of service. Personnel employing this operational structure have consistently demonstrated the ability to provide quality programs that result in high customer satisfaction and service excellence.

Codes:
M - Midland
G - Gladwin